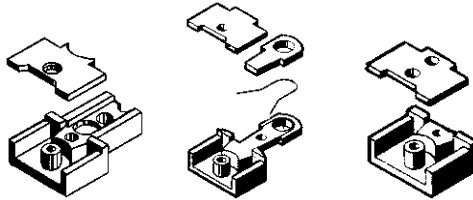


With the exception of the gear box lid included with the #1838 coupler, these replacement couplers use the same gear box, gear box lid and centering springs.

Couplers will fit into the following Draft Gear box styles.



#831/1831 type
Truck Mount Gear Box

#832/1832 type
Swinging Gear Box

#835/1835 type
Short Gear Box

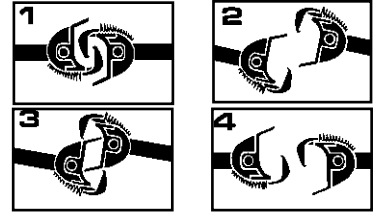
COUPLER OPERATION TO COUPLE -

Simply push cars together until knuckles bypass each other and lock into position.

FOR DELAYED UNCOUPLING -

1) Stop with the couplers over an uncoupler and back up slightly with the couplers still over the uncoupler, allowing slack to occur between couplers. 2) Pull forward slightly. Couplers are now in the delayed position. 3) Back up, pushing the car(s) to the desired location. Do not permit slack to develop between couplers. 4) Pull forward, leaving the car(s) where desired. Couplers automatically return to normal coupling position.

Use Kadée® Greas-em, the dry lubricant recommended for use with all Kadée® Magne-Matic® couplers. Grease-em will not attract the dirt and dust that gums up the inside of couplers like oil, grease or other lubricants will. Use our #829 #1-Scale or #880 G-Scale Height Gauge to check for the correct coupler height and trip pin clearance. The N.M.R.A. standard for coupler height is the centerline of coupler is 1 1/16" (1.0625") for #1-Scale & 1 1/8" (1.125") G-Scale.



NOTE: If couplers swing open too far when uncoupling, lower magnet slightly to correct.

Note: We include extra knuckle springs. The Replacement Knuckle Spring used on Kadée® #1-Scale couplers are sold as the #875 (#819-828 couplers) or #1875 (1700 & 1800 series couplers) Knuckle Spring. The Knuckle Spring used on Kadée® G-Scale couplers are sold as the #860 Knuckle Spring.

For Delayed Action Uncoupling use our #842 Uncoupler, #844 Portable Uncoupler, or our #840 Uncoupler mounted in LGB track.

Kadée® coupler conversion list & coupler conversions are on the Kadée® web site for your connivance.

www.kadee.com/conv/convpl.htm



WARNING:
CHOKING HAZARD - Small Parts
Not for children under 14 years.



Made & Assembled Entirely
in the U.S.A.

Kadée®
Quality Products Co.

673 Avenue C,
White City, OR 97503-1078
022309

© 2009, Kadée® Quality Products Co.

REPLACEMENT COUPLER



#1-Scale
Medium Offset Coupler
1838



#1-Scale
Large Offset Coupler
1839



#1-Scale
Centerset/Reverse
Offset Coupler
1840



G-Scale
Centerset Coupler
1850