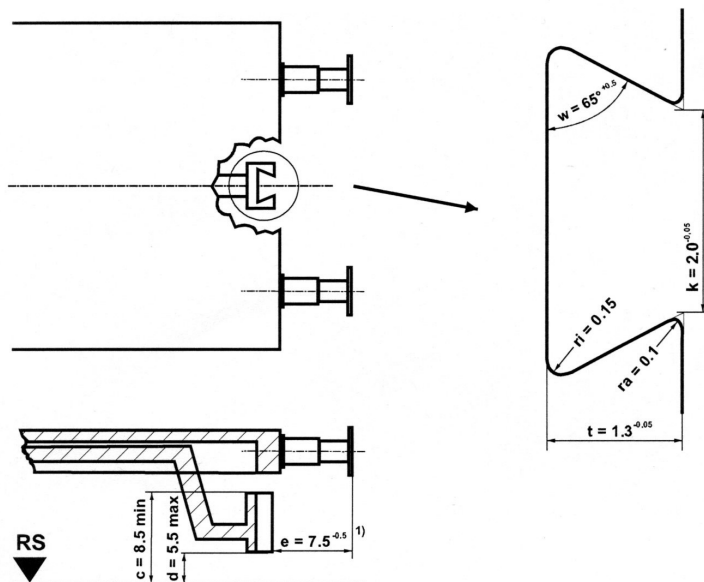


# NEM 363 RECEIVER

# NEM 363



NEM-363 to NEM pocket  
mounted at NEM-362 height for  
Kadee® NEM-362 Couplers.  
(sold by a foreign manufacture  
Not a Kadee® product.)

## NEM-362 COUPLER HEIGHT

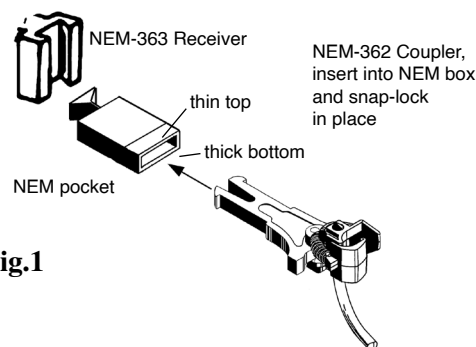
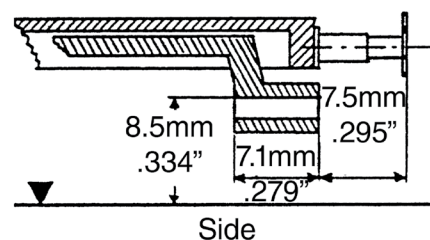


Fig.1

### #17, #18, #19, #20 NEM COUPLER CONVERSION

1. Remove the truck from the underbody.
2. Remove the existing coupler by grasping the pivoting coupler bracket then pull on the coupler.
3. Insert the NEM pocket (sold by a foreign manufacture) into NEM-363 Receiver. by sliding it from the top or bottom. Set the height to the top of the NEM pocket to 8.8mm. The NEM pocket has a thick and thin top/bottom that can affect coupler height depending on how the box is oriented.

4. The **top inside of the NEM-363 to NEM snap in pocket must be mounted at 8.5mm** in order for the Kadee NEM-362 coupler to be at the correct height. You may need to file or modify car to get the NEM snap in coupler pocket at the correct height for Kadee NEM-362 couplers.

**Kadee NEM-362 couplers are designed to operate at 8.8mm NEM pocket height .**

5. Insert the (#17, #18, #19, #20) NEM-362 Coupler by sliding it into the coupler pocket until it snaps in place.
6. Use Kadee's® #231 Greas-em graphite lubricant and work coupler back and forth to coat surfaces.
7. Check for correct coupler height, function, and clearance and make any adjustments necessary with the #206 coupler height gauge.

**Note:** If the NEM-363 to NEM snap in pocket can't be set to the correct 8.8mm NEM pocket height. A different coupler mounting option would need to be used. Either by attaching a aftermarket NEM pocket at the correct 8.8mm NEM pocket height, modifying the Kadee® snap-lock shank height or custom mounting a Kadee coupler gearbox to the car at the correct height to match the #206 coupler height gauge. Remember the wedge on the back of the #206 height gauge will show you the correct Kadee® gearbox mounting height for the any of our centerset coupler options.

### MODIFYING SNAP-LOCK SHANK COUPLER HEIGHT (FIG.2)

1. Cut the snap-lock shank off the coupler you are going to be replacing.
2. Attach the cut off snap-lock shank off the coupler to the Kadee NEM-362 shank with a 0-48 x 3/16 self tapping screw. Use different thicknesses of spacers to adjust height and adjust shank lengths for buffer clearance.
3. Once the desired offset and shank length is set a small drop of Superglue on the screw joint will secure the connection for reliable operation.

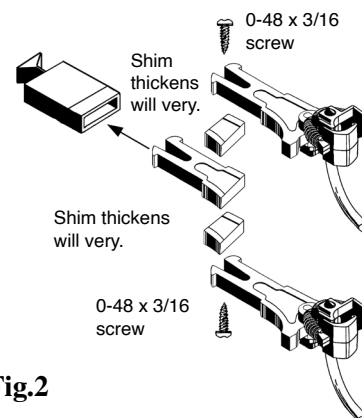


Fig.2