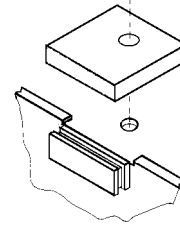


AHM (RIVAROSSİ)

#38 COUPLER CONVERSION

1. Remove loco shell from chassis and remove AHM couplers.
2. Modify both coupler pockets to accept 30-Series Draft Gear Box using trial and error.
3. Assemble #38 Couplers and install on centerline of loco, 15/64" from front edge of pilot. Check for proper height. If necessary shim or file away as needed.
4. Check for correct coupler height, function, and clearance and make any adjustments necessary.

WHITCOMB SWITCHER



Shim or cut away as is necessary to provide correct coupler height

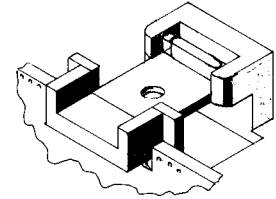


Fig.1

#38 Installation