

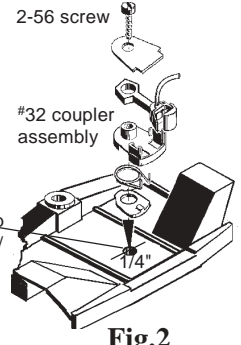
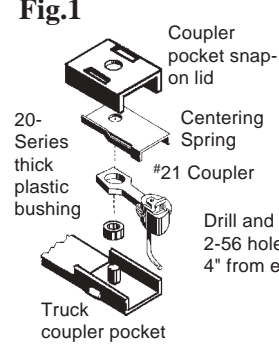
# COX (CHINA)

# EXTENDED VISION CABOOSE

## #21 TRUCK OR #32 BODY MOUNTED COUPLER CONVERSION

1. Remove snap-on coupler pocket lid and existing coupler and discard coupler.
2. Use the thicker bushing on the 20-Series sprue and place over centerpost in coupler pocket, push down bushing. Place #21 Coupler and Centering Spring over bushing and secure assembly with snap-on lid. See Fig.1.
3. For body mounted option use #32 coupler assembled with the Torsion Spring on top and Lid on bottom. Drill and tap a 2-56 hole on centerline and 1/4" from body end. Secure coupler assembly with a 2-56 screw. Trim screw flush with top of deck. See Fig. 2.
4. Check for correct coupler height, function, and clearance and make any adjustments necessary.

Fig.1



#21 or #32 Installation

Fig.2