

VARNEY

No.5® COUPLER CONVERSION

1. Remove coupler and cover plate by removing end of rivet.
2. For the rear: Modify the No.5® Draft Gear Box and Lid. Cut off side mounting lugs flush. See Fig.1. For the pilot: Modify the No.5® Draft Gear Box by cutting off side mounting lugs and sides to fit in loco coupler pocket. Also round off back corners to fit curvature of pocket. See Fig. 2.
3. Assemble the No.5® Coupler with Centering Spring on top. Glue assembly together with a plastic compatible cement applied sparingly along seams only.
4. Drill and tap a 2-56 hole in the center of the frame 7/32" from end. Secure coupler assembly with a 2-56 screw inserted from the top and 2-56 nut. Do not over tighten.
5. Check for correct coupler height, function, and clearance and make any adjustments necessary.

0-4-0 DOCKSIDE

Modify No.5® Draft Gear Box and Lid by cutting off side mounting lugs flush with sides

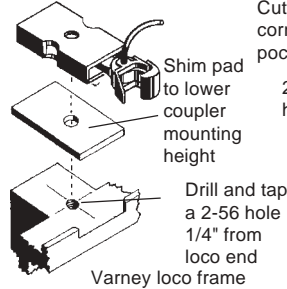


Fig.1 CAB (REAR) END

No.5® Installation

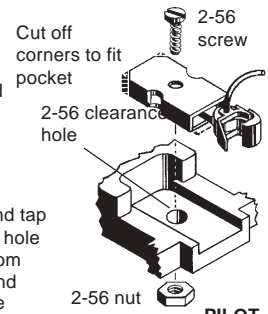


Fig.2 PILOT