



Kadee® Quality Products Co.
673 Avenue C
White City, OR 97503-1078
U.S.A.

Tel: 541-826-3883 FAX: 541-826-4013 <http://www.kadee.com> e-mail: mail@kadee.com

The Coupler People®



The Coupler People®

April 2022



New Products, News,

and Information...

Made & Assembled Entirely in the U.S.A.

Type "E" G-Scale Coupler
Straight Centerset Shank Couplers with
Body Mount Gearboxes

"Prototype" Head - Centerset Shank Couplers & #910
 (#830) Body Mount Gearboxes.

- AAR Type "E" Coupler
- Simple Drop in Design
- Hidden Knuckle Spring
- Trouble Free Operation
- Compatible with All Kadee® G-Scale Couplers
- World-Renowned Quality & Performance
- They just Last & Last & Last...
- Patent number 7,810,660 B1

Hidden Knuckle Spring



EASY TO USE

#906

\$9.99

One pair per package

April 2022 New Rolling Stock!

Kadee® prides itself in creating and manufacturing premium "RTR" rolling stock as close to scale & detail as possible. Model railroaders can expect only the best quality & craftsmanship with every Kadee® quality product. Nothing stacks up to the accuracy, detail, quality, & authenticity of Kadee® Cars over all other "RTR" cars on the market.



Made & Assembled
Entirely in the U.S.A.



HO-Scale Ready-to-Run Rolling Stock



NEW

6744 NH #40514 \$39.95

New Haven
Lot: 8340 - Series: 40500-40514
BLT. 1956 - Factory New
Orange & Black

Large Scale Season is Here

Type "E" G-Scale Couplers with Truck Mount Gearboxes

#907 Centerset Couplers with Truck Mount Gearboxes
"Prototype" Head - Centerset Couplers & #911 Gearboxes.

#908 Medium Couplers with Truck Mount Gearboxes
"Prototype" Head - Medium Offset Couplers & #911 Gearboxes.

#909 Large Offset Couplers with Truck Mount Gearboxes
"Prototype" Head - Large Offset Couplers & #911 Gearboxes.

- AAR Type "E" Coupler
- Simple Drop in Design
- Hidden Knuckle Spring
- Trouble Free Operation

- Compatible with All Kadee® G-Scale Couplers
- World-Renowned Quality & Performance
- They just Last & Last & Last...
- Patent number 7,810,660 B1

EASY TO USE



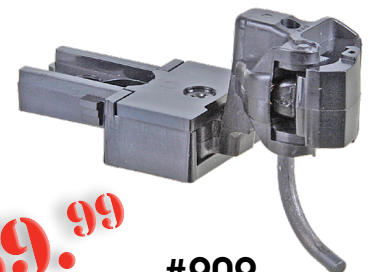
#907

One pair per package



#908

One pair per package



#909

One pair per package

CNW, DRGW, MKT, MP, SP, SSW, UP, & WP marks are made under trademark license from Union Pacific Railroad Company.

⚠ WARNING: CHOKING HAZARD - Small Parts - Not for children under 14 years.

Lettering similar to cars shown *Subject to change without notice.

©2022 Kadee® Quality Products Co. Tel: 541-826-3883 FAX: 541-826-4013 www.kadee.com e-mail: mail@kadee.com

Large Scale Uncouplers

Unmounted Delayed Uncoupler

Track Not included
1 per package



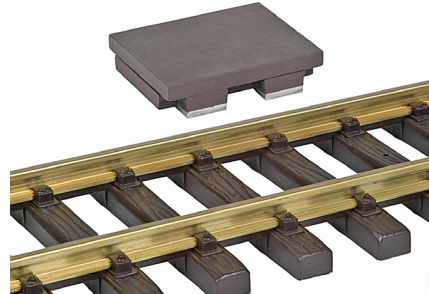
#842 Unmounted



\$7.99 each

Portable Delayed Uncoupler

Track Not included
1 per package



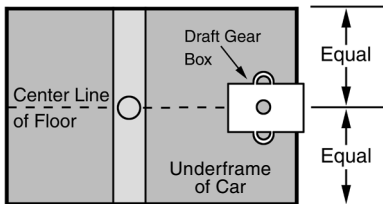
#844 Portable



\$10.99 each

EASY TO INSTALL ON MOST TRACK

Always make sure the coupler is mounted on the centerline of the car.



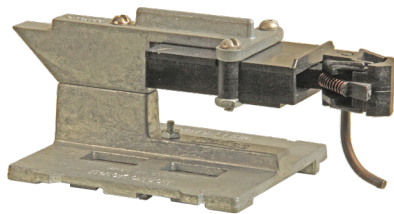
If your coupler box is not mounted on the centerline of the car it can cause several performance related issues. The trip pins will not align correctly over the uncouplers that may cause sluggish uncoupling. This can also cause the couplers to not align correctly for recoupling. Lastly non centered gearboxes can cause coupler binding issues going around corners. The coupler can run out of swing hitting the side wall of the gearbox. Depending on the severity of the bind the cars could lift, trucks could jump the track, and derail the train.

Nobody wants derailments so take your time and measure for the centerline before you drill and tap your mounting holes.

CHECK YOUR HEIGHT Large Scale Coupler Height Gauges

Metal Coupler Height Gauge

Standard Head Coupler
Multi-Purpose Metal Coupler Height Gauge

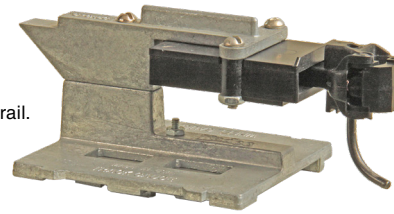


#880 G Scale 1:22.5

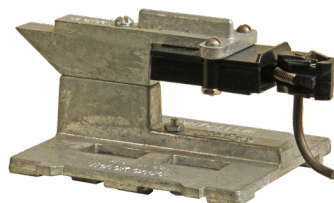


Five tools in one:

1. Provides instant visual reference of proper coupler height.
2. Gauges car underbody height from rail.
3. Gauges track width.
4. Gauges wheel width.
5. Uncoupler gluing jig.



#980 G Scale 1:22.5

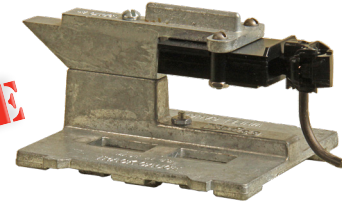


#829 #1 Scale 1:32



Your choice
\$21.99 each

EASY TO USE



#1929 #1 Scale 1:32



Current In-Stock HO-Scale "RTR" Freight Cars

041322

40' PS-1 Boxcars



4132 CGW #5464 \$42.95



4327 SOU #262050 \$39.95



4331 ACY #3454 \$39.95



5324 B&O #468807 \$38.95

50' PS-1 Boxcars



6416 MKT #90135 \$39.95



6744 NH #40514 \$39.95



6927 KDC #027 \$42.95

ACF 11,000 Gallon Insulated Tank Car



9019 SMCX #111 \$45.95



9020 SILX #101 \$45.95



7525 GM&O #32487 \$42.95

Undecorated Cars

4000	40' PS-1 Boxcar	\$36.99
5199	40' PS-1 Boxcar	\$36.99
5200	40' PS-1 Boxcar	\$36.99
6000	50' PS-1 Boxcar	\$36.99
7001	Open Bay Hopper	\$41.99
7002	Open Bay Hopper	\$41.99
7501	Open Bay Hopper	\$41.99
8001	Covered Hopper	\$41.99
8601	Covered Hopper	\$41.99



Made & Assembled Entirely in the U.S.A.

Coupler Conversions can be found at www.kadee.com/convp1

April Tech Tip

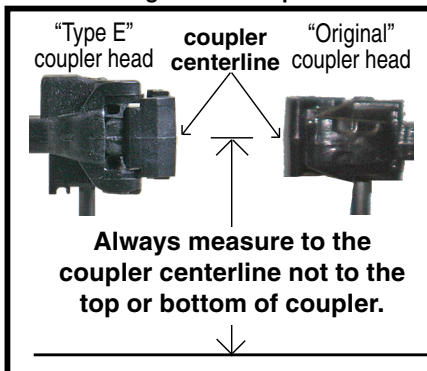
I am going to go over coupler mounting height again and again, until I stop seeing or hearing about peoples conversion video's posted on the internet that show people mounting couplers at the incorrect coupler mounting height on "how to videos". Couplers barely hooked together and then bending the trip pin is not acceptable; even if the coupler is off 20 to 30 thousandths checked with a coupler height gauge is not "good enough" for trouble free operation. If you don't want your cars coming apart when you are running them then you need to take care you have the coupler mounting height correct. "Scale" couplers make this even more critical because the coupler pulling face is smaller.

Example: When you go over that transition on your layout pulling your favorite cars the couplers knuckles will raise and lower keeping the cars connected if you have set the mounting height of the couplers at the centerline, this gives the most available coupler movement without the couplers slipping apart. If the transition on your layout is "rough" (bad track) there may not be a pulling face large enough the coupler to keep the couplers from slipping apart (you have to fix the bad track). Some people use our shelf couplers available in HO-Scale to try to fix "bad track"; but then wonder why their cars derail instead of come apart. Even shelf couplers can't fix "bad track".

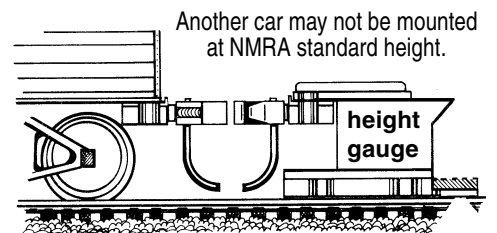
Things you should take away from this months tech tip.

- 1.) The Coupler Height Gauge for the scale you are modeling is your best friend. (Take the guess work out of proper coupler mounting. Don't use another car.)
- 2.) Always measure to the coupler centerline not to the top or bottom of coupler. (Provides the most available coupler movement without knuckles slipping apart.)
- 3.) Trip pins are factory set and should not need to be bent if coupler is mounted correctly. (If you need to bend the trip pin then your coupler is probably at the incorrect height.)
- 4.) When the coupler height gauge is used correctly whether for mounting uncouplers or mounting and fine-tuning couplers; your couplers should operate trouble free*.
(*Coupler height gauge or coupler design can't fix bad track or incorrectly setup equipment.)

Large Scale Couplers



Always measure the coupler height to a Kadee® coupler height gauge not another car.



WARNING: Cancer and Reproductive Harm - www.p65warnings.ca.gov

WARNING: CHOKING HAZARD - Small Parts - Not for children under 14 years.

CNW, DRGW, MKT, MP, SP, SSW, UP, & WP marks are made under trademark license from Union Pacific Railroad Company.

Lettering similar to cars shown *Subject to change without notice.