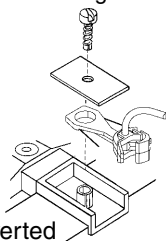




MAGNE-MATIC[®] Whisker[®] Couplers

CONTENTS: 4 #242 Draft Gear Boxes & Lids, 4 Whisker[®] Couplers, 2 Knuckle Springs

Manufacturers
cast-on draft gear box



Inverted

Kadee[®] Standard, "Scale" & Shelf Coupler heads have been designed & tested to function with all Kadee[®] HO & HO_{n3} Couplers.

The Whisker[®] coupler is a metal coupler with a built-in centering spring and will drop into most "standard" draft gear boxes. The coupler will match the length and height of our corresponding couplers (See Fig 1.) This coupler has the same reliable Magne-Matic[®] and Delayed Action operational features as our other couplers and will function with all of our HO permanent and electric, magnetic uncouplers.

The Whisker[®] centering spring is a thin wire protruding at a "V" angle forward from the pivoting hole at the end of the shank. Because the wire spring is cut by a machine the tips might be sharp and CAUTION must be taken when handling the coupler.

SHELF COUPLER NOTE: The top hood (shelf) protrudes quite a bit and may interfere with bodywork on certain models. There will be certain mounting limitations with the height of the top hood on Shelf Couplers. Because Kadee[®] Shelf Couplers keep the couplers from slipping apart, modelers may desire to use them to keep cars from unwanted uncoupling over rough or uneven trackage. However, there are limitations to Shelf Couplers that will cause derailments. Couplers are not designed to compensate for rough trackage. Although they may help in areas, don't expect them to alleviate problems with poor modular connections, dips, bumps, gaps, sharp grade changes, other rough track work.

To assemble/install the Whisker[®] coupler follow the illustrations in these instructions and before you secure the lid be sure that the wire whiskers are inside the

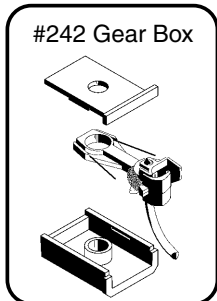


Fig 1

21, 31, 141*		"LU" Long Underset Shank Raises knuckle height about .050"	<p>Long Center Set Shank</p>
26, 36, 146*, 156*		"LC" Long Center Set Shank Knuckle is centered	
29, 39, 149*		"LO" Long Overset Shank Lowers knuckle height about .050"	
27, 37, 147*		"MU" Medium Underset Shank Raises knuckle height about .050"	<p>Medium Center Set Shank</p>
No. 5 ^o , 9, 28, 38, 58, 118*, 119*, 148*, 158*		"MC" Medium Center Set Shank Knuckle is centered	
22, 32, 142*		"MO" Medium Overset Shank Lowers knuckle height about .050"	
24, 34, 144*		"SU" Short Underset Shank Raises knuckle height about .050"	<p>Short Center Set Shank</p>
23, 33, 143*, 153*		"SC" Short Center Set Shank Knuckle is centered	
25, 35, 145*		"SO" Short Overset Shank Lowers knuckle height about .050"	

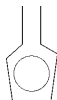
This Chart Represents Kadee[®] Coupler Shank Variations.

* Denotes couplers with the Whisker[®] Shank all other couplers use the Standard Shank. All couplers listed will function in each others draft gear boxes with exception of the 30-Series #233 gear box will not work with Whisker[®] Couplers. The #252 gear box is the Whisker[®] Coupler 30-Series equivalent gear box.

^{no} 5^o, 9, 58, & all Whisker[®] Couplers are all metal.
20 & 30 Series Couplers have plastic insulated shanks and metal knuckles.

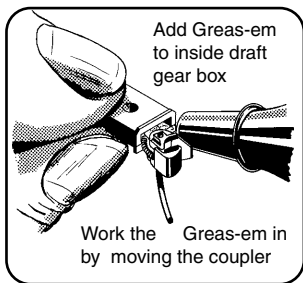


* Whisker[®] Shank



Standard Shank

PHOTO NUMBER: 5.882.028



edges of the box and not caught in the seam of the box and lid. The wire springs are quite resilient but not indestructible and are NOT REPLACEABLE so if you damage the spring the coupler can not be used again. When securing the lid or box cover make sure the coupler flexes back and forth freely.

To avoid electrical shorting through the coupler Kadee® does not recommend a metal to metal coupler mounting. Use a plastic draft gear box or an insulated coupler from our 20 or 30 series coupler lines.

If the pivoting post is too small (most commonly found on cast-on draft gear boxes) the coupler will “slop around” or “droop” in the draft gear box. Make a small bushing (or sleeve) to slip over the post. We include two sizes of sleeves in our 20 series coupler packages (.055” ID and .100” ID) and they also are marketed separately as product #213.

Mount the assembled coupler on the centerline of car with a #2 or 2-56 screw.

To reduce friction and enhance performance burnish the coupler shank and add a bit of dry graphite lubricant into the draft gear box, such as Kadee® #231 Greas-em.

Use our #205 or #206 Height Gauge to check for the correct coupler height and trip pin clearance. The HO-Scale N.M.R.A. standard for coupler height is the centerline of coupler at 25/64” (.390”). Use our #237 Trip Pin Pliers to carefully adjust the trip pin clearance if necessary.

Note: The Knuckle Spring used on Kadee® “scale” couplers are unique and should not be interchanged with the standard #622 HO-Scale Knuckle Spring. Replacement springs for “scale” couplers are sold as the #625 Knuckle Spring.

To replace the knuckle spring, use our #241 Dual Tool (Manual Uncoupling Tool & Spring Pic) and insert it between the last two coils on either end of the spring.

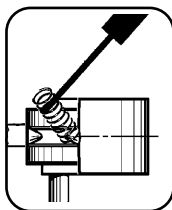


Then slip the end of the spring onto one of the retaining cones in the knuckle and compress the spring until you can slip the other end onto the opposing cone then withdraw the pick.

NOTE: To secure the knuckle spring more durably carefully dip the last two coils in DUCO® (or similar type of glue) or a thick slow drying CA glue (“do not” use the thin CA glue because it can easily “wick” into the knuckle and ruin the coupler).

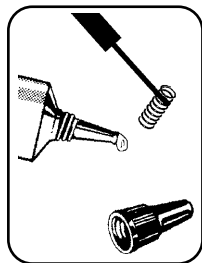
Then slip the end of the spring onto one of the retaining cones in the knuckle and compress the spring until you can slip the other end onto the opposing cone then withdraw the pick.

For Non-Delayed Uncoupling use our #312 Between-the-Rails Permanent Magnet Uncoupler. For Delayed Action Uncoupling use our #321 Between-the-Rails Permanent Magnet Uncoupler, #308 Under-the-Track Permanent Magnet, or our #309 Magne-Electric (Electro-Magnet) Under-the-Ties Uncoupler.



Kadee® coupler conversion list & coupler conversions are on the Kadee® website for your convince.

www.kadee.com/convpl.htm



Made & Assembled Entirely in the U.S.A.

Quality Products Co.

©2020, Kadee® Quality Products Co. 062620

673 Avenue C • White City, OR 97503 • www.kadee.com • mail@kadee.com