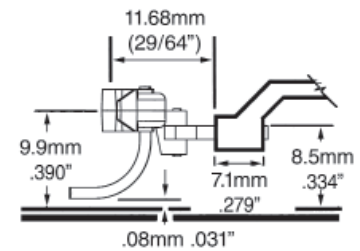
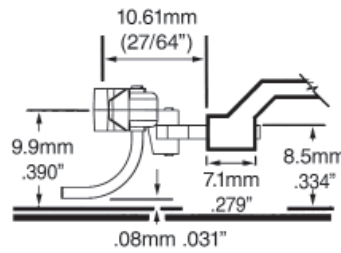
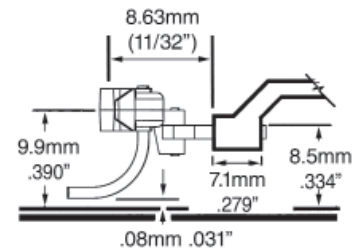
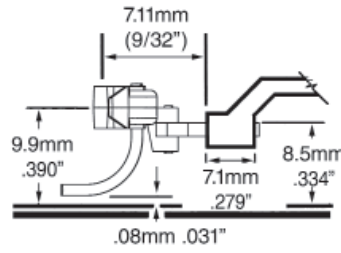
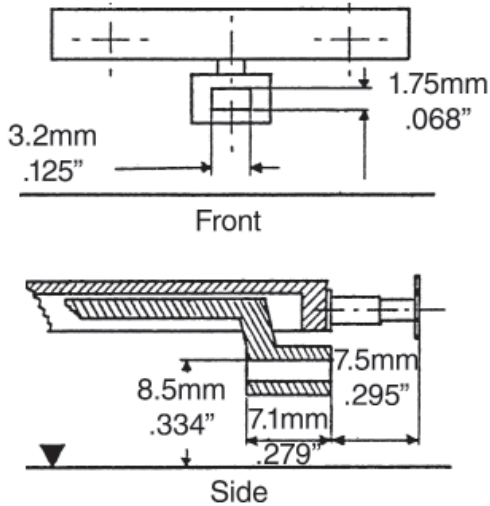


NEM COUPLER POCKETS

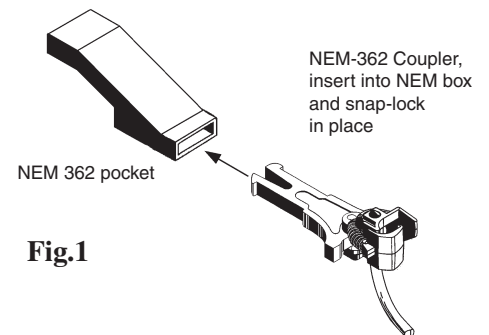
NEM 362

European NEM 362 coupler pocket



#17, #18, #19, #20 NEM COUPLER CONVERSION

1. Remove the truck from the underbody.
2. Remove the existing coupler by grasping the pivoting coupler bracket then pull on the coupler.
3. Insert the (#17, #18, #19, #20) NEM-362 Coupler by sliding it into the coupler pocket until it snaps in place.
4. Use Kadee's® #231 Greas-em graphite lubricant and work coupler back and forth to coat surfaces.
5. Check for correct coupler height, function, and clearance and make any adjustments necessary.



NEM-362 is one of the European standards for OO Scale and HO Scale cars.

Note: There are company's putting NEM Type snap in coupler pockets on models that are not NEM-362. NEM-362 pockets have to be mounted at 8.5mm height to be a NEM-362 coupler pocket Kadee® #17, #18, #19, #20 NEM-362 Couplers only work in NEM-362 coupler pockets mounted at NEM-362 coupler pocket height.

If you have a car or locomotive with a NEM Type snap in coupler pocket that is not at NEM-362 standard height you will have to remount a NEM-362 Snap in pocket at the correct NEM-362 mounting height.

Please do not ask for offset NEM-362 couplers because an offset coupler would not be NEM-362 coupler, NEM-362 couplers are only mounted at 8.5mm height.

There are to may coupler height options that company's are mounting NEM Type snap pockets at. You have to move the snap in coupler pocket to NEM-362 mounting height if the pocket is mounted incorrectly.