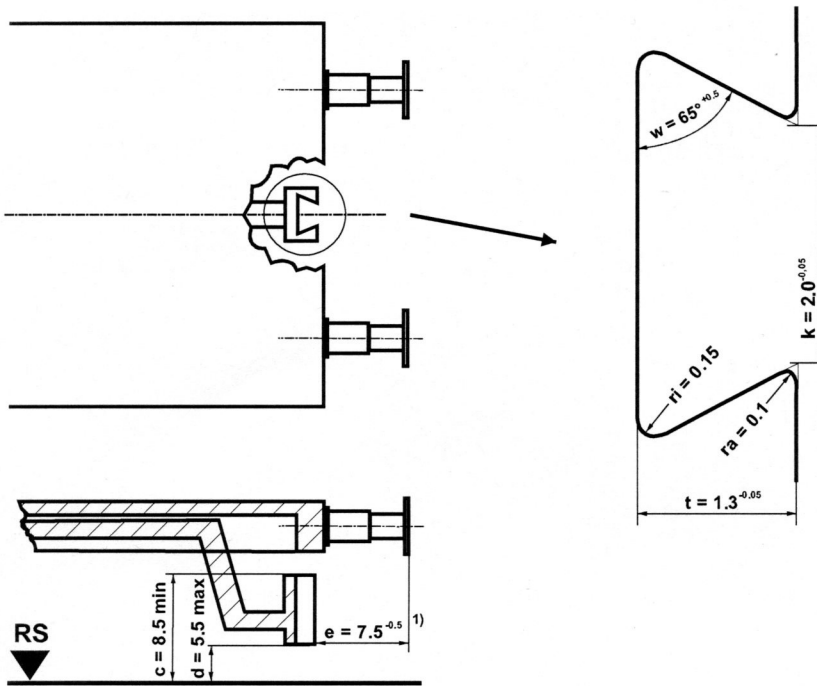


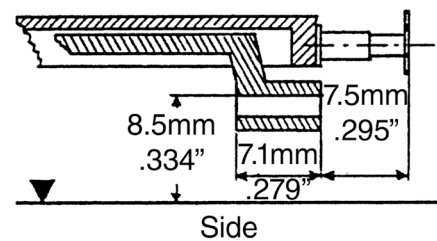
NEM 363 RECEIVER

NEM 363



NEM-363 to NEM pocket mounted at NEM-362 height for Kadee® NEM-362 Couplers.
(sold by a foreign manufacture Not a Kadee® product.)

NEM-362 COUPLER HEIGHT



#17, #18, #19, #20 NEM COUPLER CONVERSION

1. Remove the truck from the underbody.
2. Remove the existing coupler by grasping the pivoting coupler bracket then pull on the coupler.
3. Insert the NEM pocket (sold by a foreign manufacture) into NEM-363 Receiver. by sliding it from the top or bottom. Set the height to the top of the NEM pocket to 8.8mm.
4. Insert the (#17, #18, #19, #20) NEM-362 Coupler by sliding it into the coupler pocket until it snaps in place.
5. Use Kadee's® #231 Greas-em graphite lubricant and work coupler back and forth to coat surfaces.
6. Check for correct coupler height, function, and clearance and make any adjustments necessary with the #206 coupler height gauge.

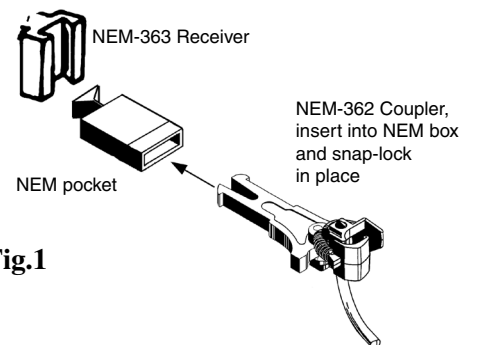


Fig.1