

NEM POCKET

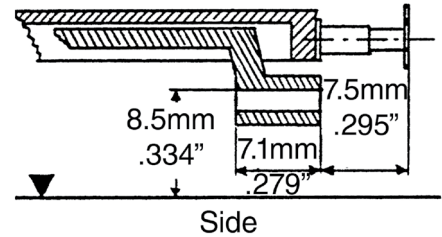


NEM pocket mounted at
NEM-362 height for Kadee®
NEM-362 Couplers.

(Not a Kadee® product.)

(E.g. Hornby, Bachmann Branchline)

NEM-362 COUPLER HEIGHT



#17, #18, #19, #20 NEM COUPLER CONVERSION

1. Remove the truck from the underbody.
2. Remove the existing coupler by grasping the pivoting coupler bracket then pull on the coupler.
3. The **top inside of the NEM pocket must be mounted at 8.5mm** in order for the Kadee NEM-362 coupler to be at the correct height. You may need to file or modify car to get the NEM pocket at the correct height for Kadee NEM-362 couplers.

Kadee NEM-362 couplers are designed to operate at 8.8mm NEM pocket height.

4. Insert the (#17, #18, #19, #20) NEM-362 Coupler by sliding it into the coupler pocket until it snaps in place.
5. Use Kadee's® #231 Greas-em graphite lubricant and work coupler back and forth to coat surfaces.
6. Check for correct coupler height, function, and clearance and make any adjustments necessary with the #206 coupler height gauge.

Note: If the NEM pocket can't be set to the correct 8.8mm NEM pocket height. A different coupler mounting option would need to be used. Either by attaching a aftermarket NEM pocket at the correct 8.8mm NEM pocket height, modifying the Kadee® snap-lock shank height or custom mounting a Kadee coupler gearbox to the car at the correct height to match the #206 coupler height gauge. Remember the wedge on the back of the #206 height gauge will show you the correct Kadee® gearbox mounting height for the any of our centerset coupler options.

NEM-362 is one of the European standards for OO Scale and HO Scale cars.

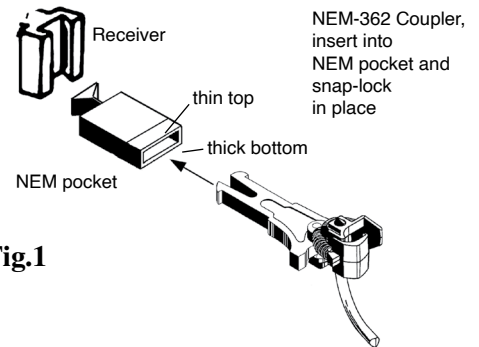
Note: There are models that have NEM Type snap pockets that are not NEM-362 height. NEM-362 pockets have to be mounted at 8.5mm height to be a NEM-362 coupler pocket Kadee® #17, #18, #19, #20 NEM-362 Couplers only work in NEM-362 coupler pockets mounted at NEM-362 coupler pocket height without modification.

NEM 363 ADJUSTABLE HEIGHT COUPLER OPTION

If you have a car or locomotive with a NEM Type snap in coupler pocket that is not at NEM-362 standard height you will have to use our NEM-363 adjustable height coupler with our Kadee® NEM 363 to NEM 362 Adapter to mount the coupler at the correct height. Use the #205 or #206 Coupler Height Gauge to set the correct height.

Note: The Kadee® NEM 363 to NEM 362 Adapter adds .085" (2.16 mm) to the coupler length so you may need to use the next shorter coupler to compensate for the adapter length.

Fig.1



SEE THE NEM-363 COUPLER INSTRUCTIONS

Kadee® NEM 363 to
NEM 362 Adapter

