

COX

HUSTLER

#28 COUPLER CONVERSION

1. Remove the body shell from the chassis and remove the existing coupler retaining clips and couplers.
2. Drill and tap a 2-56 hole through existing coupler pocket hole. Assemble #28 Coupler and secure to frame with 2-56 screw. See Fig.1. Widen shell coupler opening equally on each side to fit width of 20-Series Box.
3. Check for correct coupler height, function, and clearance and make any adjustments necessary.

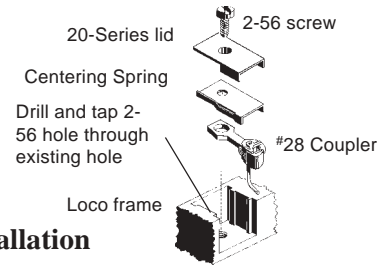


Fig.1
#28 Installation