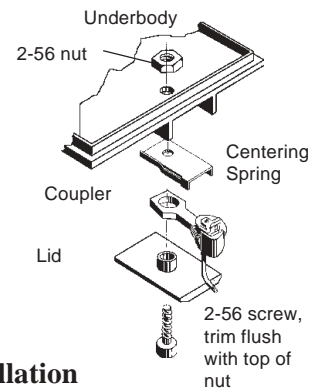


# CON-COR

# REEFER

## #27 COUPLER CONVERSION

1. Remove the trucks from the underbody of the car. Disassemble car to access top of underfloor with attached weight.
2. Assemble the Centering Spring over the Coupler and place on centerpost of #27 Lid. Place this assembly over the center hole in the Con-Cor box.
3. Secure with a 2-56 screw and nut. Insert 2-56 screw from the bottom, through lid, coupler, spring and underfloor and tighten with nut. Do not over tighten. Trim protruding screw threads flush with top of nut.
5. Check for correct coupler height, function, and clearance and make any adjustments necessary.



**Fig.1**  
**#27 Installation**

031604