

IHC

2-8-2 MIKADO

Pilot #38 Tender #5

PILOT: Remove the pilot wheels or push them aside. Make a shim from .040" thick styrene stock 5/16" x 1/2". Place the shim behind the pocket opening making a platform the level of the inside of the upper lip of the pocket (Note: the thickness of the shim may vary according to the pocket height, some have used a .030" thick shim). Cement the shim in place.

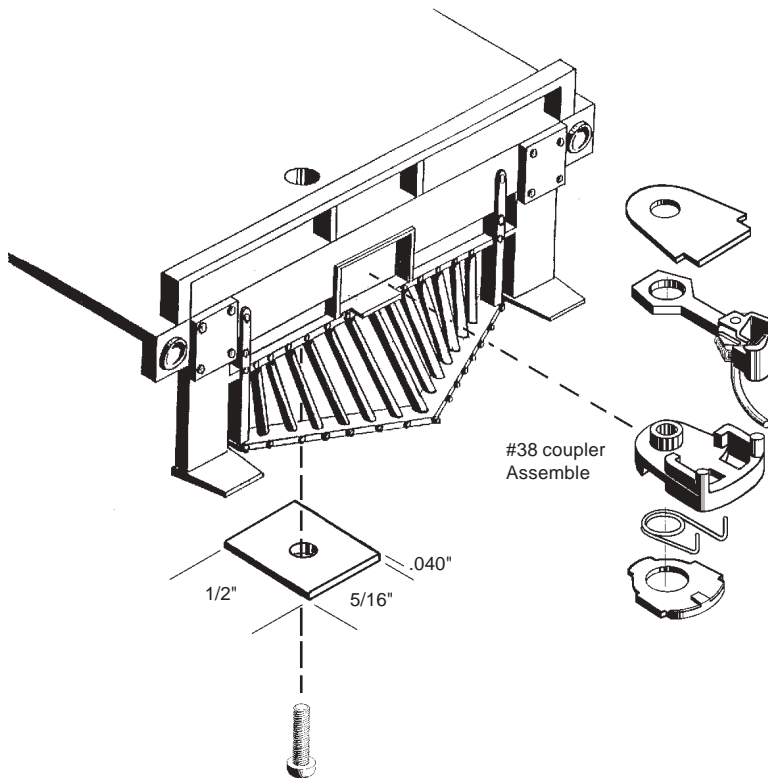
Assemble the #38 coupler with the spring side of the draft gear box on the bottom and the thin lid on the top of the coupler.

Enlarge the opening by filing the sides and bottom only of the pocket until the coupler assembly slips into the opening and sets level on the platform. This may eliminate the entire bottom of the pocket.

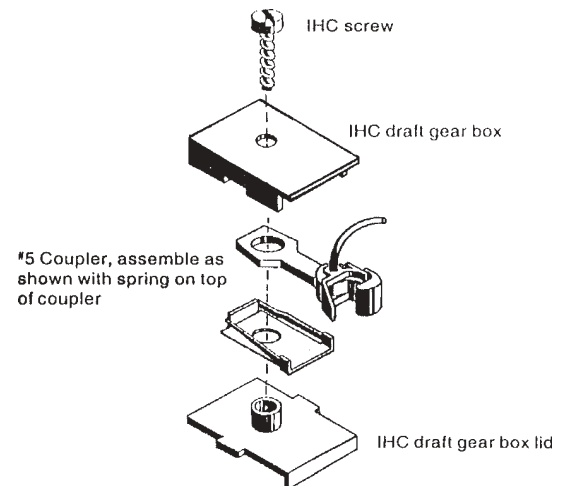
Slide the coupler back on the platform to where the front end of the draft gear box is even with the upper lip, make sure the trip pin has enough clearance for the tip of the "cow catcher". Align the coupler along the centerline of the loco and mark the platform through the hole of the coupler. Drill (#50 drill) and tap a hole through the platform for a 2-56 screw. Secure the coupler with a plastic screw from the coupler package and trim it flush with the top of the pilot deck (platform).

TENDER: Disassemble the original draft gear box and remove coupler. Place the #5 centering spring over the post of the IHC draft gear box lid then carefully place the coupler into the spring and place the assembly into the box. Secure assembled coupler to the tender with the original screw.

Check both couplers for proper coupler height, function, and clearance then make any necessary adjustments.



#38 Pilot Installation



#5 Tender Installation