

LGB

F-7 Locomotive

#831 'G' Scale
#1831 #1 Scale

Remove the old coupler.

If the boss is to be left on the truck coupler mount, it must be filed a little smaller in diameter or the clearance hole on the Kadee® gearbox shank must be enlarged slightly to fit.

After mounting the new coupler, mark the location of the new screw hole.

Remove the coupler and drill a 3/32" hole.

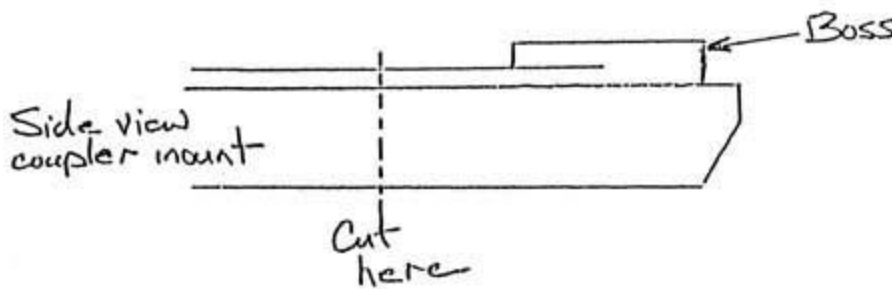
Secure the coupler with a #4x3/8" screw.

If the boss is cut off of the truck coupler mount. The original mounting screw hole can be used.

Cutting off the boss on the front is best done with nippers since it is difficult to fit a saw in the small area.

This will also allow the coupler to be mounted in closer on the locomotive.

Cut as shown:



If the coupler height is too low, place one or two of the white .010" shims folded in half under the rear of the gear box shank.