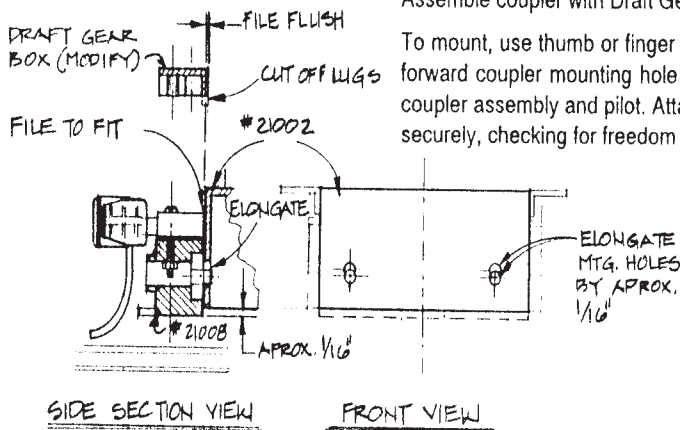


MDC #G2110 'Big Hustler' Locomotive

Remove die-cast pilot (#21008) and file center protruding lug hole flush with top of deck. Be careful not to file off any of the deck detail.

Modify Kadee® #835 (G-Scale) Coupler Draft Gear Box to fit and secure on top of deck using screw and nut included. Modify by cutting off protruding alignment lugs flush with top of rest of Draft Gear Box. Position and fasten on die-cast pilot, making sure it is pushed as far forward as possible. Then, file Draft Gear Box Back flush with back of die-cast pilot.



Assemble coupler with Draft Gear Box upside down and mount WITHOUT LID as per #835 Instructions.

To mount, use thumb or finger to keep coupler assembly together while placing on top center of pilot. Align forward coupler mounting hole and center die-cast pilot hole. Insert mounting screw from top and through coupler assembly and pilot. Attach nut to screw through original coupler opening. Tighten assembly in place securely, checking for freedom of movement. Coupler should be able to swing freely from side to side.

TO ADJUST COUPLER HEIGHT: Modify locomotive shell (#21002) to lower die-cast pilot and coupler on both ends by approximately 1/16" or equal to thickness of 'pilot step' as follows: Using a small round file, elongate holes. You may wish to mark or scribe guidelines first so as to file correct amount. **IMPORTANT: DO NOT WIDEN** holes, the original width must be maintained. Push die-cast pilot with mounted coupler assembly onto locomotive body. Check coupler height with Kadee® #830 Coupler Height Gauge as per #835 Coupler Instructions.

After checking coupler height, secure with compatible glue or epoxy.