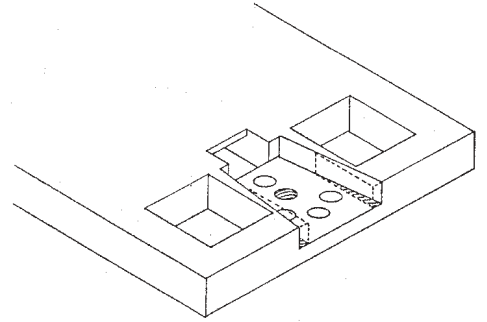


RIVAROSSO (POST 1993)**4-4-0****AMERICAN, INYO, RENO, & GENOA****#38 Coupler Conversion, tender only.**

We don't recommend pilot coupler conversions for these locomotives.

For tender: Remove and discard coupler and pin. Measure .203" back from the end of the coupler platform, it should be along the centerline and between the three arched holes and the rear pin hole. Drill and tap for 2-56 screw, using a #50 drill. Assemble the #38 Coupler according to it's instructions with the lid on the top and the spring side on the bottom of the coupler. File the sides of the platform in a tapered manner to fit the 30-Series draft gear box. Be sure both sides are the same to keep the draft gear box properly centered. Secure the coupler to the platform with a 1/4" 2-56 screw. Check for correct coupler height, function and clearance and make adjustments necessary.



031204