

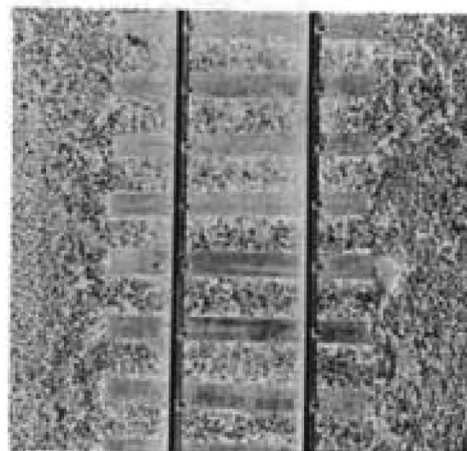
Kadее twin "Rail Spiker"

TIPS for SPIKER OWNERS:

SPIKER CONVERSION KITS

#700-70A CONVERTS CODE 100 TO CODE 70

- One - 700-23-3 Staple Guide
- One - 700-33 Cutter Retaining Cap
- Two - 700-19 Cutter Blade
- One - 700-39 Chip Magnet & Shield
- One - 700-13 Hammer Cushion Seats
- One - #341 Code 70 Track Gauge
- Two - 700-31 Code 70 Spikes
- One - 700-21 Cutter Head



#700-83A CONVERTS CODE 100 TO CODE 83

- One - 700-23-3 Staple Guide
- Two - 700-25 Cutter Blades
- One - 700-40 Cutter Retaining Cap
- One - 700-39 Chip Magnet & Shield
- One - 700-13 Hammer Cushion Seats
- One - #343 Code 83 Track Gauge
- Two - 700-31 Code 83 Spikes

Kadее Quality products co.

673 Avenue C
White City, OR 97503-1078



Out of Stock

#700-83B CONVERTS CODE 70 CODE 83

- Same Staple Guide used for both code 70 & 83
- One - 700-40 Cutter Retaining Cap
- Two - 700-25 Cutter Blades
- One - 700-39 Chip Magnet & Shield
- One - 700-13 Hammer Cushion Seats
- One - #343 Code 83 Track Gauge
- Two - 700-31 Code 83 Spikes
- One - 700-22 Cutter Head

#700-100A CONVERTS CODE 70 TO CODE 100

- One - 700-23-1 Staple Guide
- One - 700-35 Cutter Retaining Cap
- Two - 700-20 Cutter Blades
- One - 700-39 Chip Magnet & Shield
- One - 700-13 Hammer Cushion Seats
- One - #341 Code 100 Track Gauge
- One - 700-22 Cutter Head
- Two - 700-32 Code 100 Spikes

Use this chart to help determine how many spikes you will need.

Prototype	1 mile = 5,280 feet ties laid on 21-inch centers = 3,017 ties per mile
O-Gauge	.250" = 1 scale foot 1 scale mile = 110 feet ties laid on .437-inch centers = 27 ties per foot 108 spikes per foot 1 box (4,000) will spike 37 feet*
HO-Gauge	.138" = 1 scale foot 1 scale mile = 60.72 feet ties laid on .242-inch centers = 50 ties per foot 200 spikes per foot 1 box (4,000) will spike 20 feet*

* This data is based on spiking both rails on every tie (4 spikes per tie).
If you spike every other tie, multiply this figure by 2. If you spike every fourth tie, multiply by 4.

TWIN RAIL SPIKERS Replacement Parts List

PART NUMBER	PART OR ASSEMBLY NAME	FITS SPIKER CODE NUMBER			PRICE
		70	83	100	
700-1	BODY	●	●	●	
700-2	HANDLE	●	●	●	
700-3	HANDLE PIN	●	●	●	
700-4	TRIP LEVER	●	●	●	
700-4A-1	TRIP LEVER ASSEMBLY	●	●	●	
700-5	TRIP LEVER PIN	●	●	●	
700-6	ROLLER PIN	●	●	●	
700-7	ROLLER	●	●	●	
700-8	LEVER RETURN SPRING	●	●	●	
700-9	SPRING PIN	●	●	●	
700-10	WEAR PLATE	●	●	●	
700-11	HAMMER BLOCK	●	●	●	
700-12	HAMMER CUSHION (rubber)	●	●	●	
700-13	HAMMER CUSHION SEATS	●	●	●	3 For
700-14	HAMMER SPRING	●	●	●	
700-17	SPRING SHIM	●	●	●	
700-18A-1	SLIDE COVER ASSEMBLY	●	●	●	
700-24A-1	STAPLE PUSHER ASSEMBLY	●	●	●	
700-28	BUMPER (rubber)	●	●	●	
700-29	STAPLE GUIDE LOCK SCREW	●	●	●	
700-30	STAPLE COVER PLATE	●	●	●	
700-34	SLIDE COVER LOCK	●	●	●	
700-37	RETAINING RING	●	●	●	
700-39	CHIP MAGNET AND SHIELD	●	●	●	
700-19	CUTTER BLADE	●			
700-20	CUTTER BLADE			●	
700-25	CUTTER BLADE		●		
700-21	CUTTER HEAD	●			
700-22	CUTTER HEAD		●	●	
700-23-1	STAPLE GUIDE			●	
700-23-3	STAPLE GUIDE	●	●		
700-31	SPIKES (4000/Box)	●	●		
700-32	SPIKES (4000/Box)			●	
700-33	CUTTER RETAINING CAP	●			
700-35	CUTTER RETAINING CAP			●	
700-40	CUTTER RETAINING CAP		●		

Replacement parts are available directly from the factory only.

041492

