

TYCO

No.5® COUPLER CONVERSION

PLYMOUTH INDUSTRIAL SWITCHER

1. Remove side frames, mechanism, coupler blocks and couplers. Note: do not lose small formed paper insulator that fits between side frames and blocks at each end.
2. Widen coupler opening on pilot to allow spring to slide in. Make a bushing for post "A" by cutting off hub from No.5® Lid, see Fig.1. File bushing to same height as shoulder on post "A".
3. Place Centering spring over post "B" and glue in place with a tiny drop of glue. Insert No.5® Coupler from the front through pilot coupler opening, align holes, align coupler blocks and seat posts "A" and "B".
4. Check for correct coupler height, function, and clearance and make any adjustments necessary.

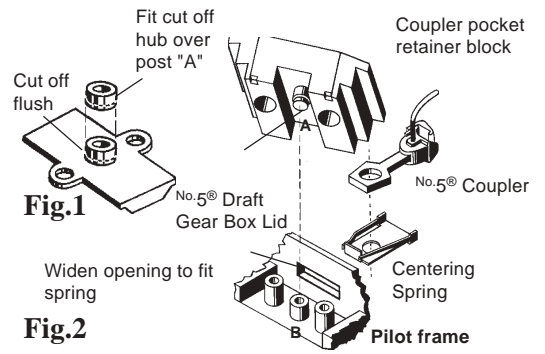


Fig.1

Fig.2

No.5® Installation